

MODELING AND UN STEADY STATE THERMAL ANALYSIS OF MILLING PROCESS USING DIFFERENT CONVENTIONAL FLUIDS

PARUMANDLA AKHILA¹ Dr. P.SRIKAR²

¹M. Tech scholar, Department of mechanical engineering, Malla Reddy College of Engineering and Technology, Maisammaguda, Bahadurpally, Hyderabad, Telangana 500100

² Professor , Department of mechanical engineering, Malla Reddy College of Engineering and Technology, Maisammaguda, Bahadurpally, Hyderabad, Telangana 500100

Abstract Milling is the way toward removing of material by taking care of a work piece past a turning various tooth. Quick method of machining should be possible through numerous teeth of the processing. This causes the temperatures generated at the cutting edge to constantly fluctuate between various levels of hot and cold. The temperature variations are exacerbated when the cutting edge goes into and out of the cut. In finishing operations, the application of cutting fluid will not reduce the tool life as much as in roughing, due to the reduced level of heat generation. Through this machining the surface might be bended, precise or will not get accurate dimensions.

In the present experiment the cutting fluids like servo oil, palm oil and sun flower oil are utilized as coolants in the milling operations. Servo oil is used as the lubricant in two stroke or four stroke engines like motor cycles, The Palm oil is used in food manufacturing, in beauty products, and as bio fuel and sun flower oil used as food oil, and in industrial applications for cosmetics and detergent production. By utilizing the oils in the milling the heat transfer is increases. The face milling process is used in all the cases to determine the un steady state FEA behavior. Cemented carbide and HSS cutting instruments are utilized these cutting fluids for cutting tools. Milling was done under dry condition and further more utilizing 3 coolants. The softwares like CATIA and ANSYS are used in the present study; CATIA is the parametric software was used to make the modeling and ANSYS is used in analysis and finally the comparison of heat transfer rate is made between three different oil cases.

Key words: milling process, cutting fluid, ANSYS, CATIA, FEA.

I. INTRODUCTION

A milling machine removes material from a work piece by rotating a cutting tool (cutter) and moving it into the work piece. Milling machines, either vertical or horizontal, are usually used to machine flat and irregularly shaped surfaces and can be used to drill, bore, and cut gears, threads, and slots. Milling is one of the types of cutting machine which is used for various types of operations on it.

The milling machine is operated with the help of an electric motor which is connected to a spindle of the cutting tool to produce high rotational speed to remove the extra material from work. on this type of machine, we can work on small parts and large parts. We can operate various types of operations on this machine like angular, form, face, up and down milling, etc. In this type of operation, the work piece used to feed against the cutting tool which makes the high rotational speed at a fixed center. In this type of machining operation, there are different types of cutters used in milling operations and in cutting tools of the milling machine the number of teeth on it depends on the circumference of a cutting tool.

1.1 Milling Machine Operation

All the milling machines are used to cut/remove the extra material from a workpiece to obtain a required product. First, the supply of electricity is needed to run the motor with the help of this, spindle makes rotation with high speed due to the connection between them. for further rotation of the cutting tool, the spindle is connected to cutting tool holder. In some of the milling machines, we can move the spindle in different directions according to the work required. we need to feed the work towards

the cutting tool, in most of the milling machine process work gets completed in one pass towards the cutting tool due to the cutting tool consist of more than two cutters on it. In this type of machine, we can adjust the knee and there is a need of cooling oil due to continuous cutting and fast rate.

1.2 Cutting fluids used in this study

a) Servo oil

SERVO brand, from Indian Oil, is the brand leader among lubricants and greases in India and has been conferred the “Consumer Super brand” status by the Super brands Council of India. Recognized for its brand leadership by the World Brand Congress and as a Master Brand by CMO, Asia, SERVO has now carved a significant niche in over 20 countries across the globe.

b) Palm oil

It is an edible vegetable oil that comes from the fruit of oil palm trees, the scientific name is *Elaeis guineensis*. Two types of oil can be produced; crude palm oil comes from squeezing the fleshy fruit, and palm kernel oil which comes from crushing the kernel, or the stone in the middle of the fruit.

c) Sun flower oil

The cutting fluid consisted of a vegetable oil (refined sunflower oil) as base oil and additives. It was an oil-in water Nemulsion type which contained a surfactant mixture (Tween 85 and Peg 400, Merck), and various additives in the formula to meet the specifications such as resistance to bacterial growth, corrosion, antifoaming agent and anti wear. The additive concentrations used were below 10%w/w. An emulsion is a dispersion of one immiscible liquid into another, through the use of a chemical reagent that reduces the interfacial tension between the two liquids to achieve stability.

1.3 Work piece details

The material used for the test is an aluminum alloy (Al 6061). The work piece material compositions are as follows.

Table 1: Compositions of work piece

Component	Weight %
Al	87.1 - 91.4 %
Cr	0.18 - 0.28 %
Cu	1.2 - 2.0 %
Fe	<= 0.50 %
Mg	2.1 - 2.9 %
Mn	<= 0.30 %
Other,each	<= 0.05 %
Other,total	<= 0.15 %
Si	<= 0.40 %
Ti	<= 0.20 %
Zn	5.1 - 6.1 %

II. LITERATURE SURVEY

Mandeep Chahal et al. with the more precise demands of modern engineering products, the control of surface texture has become more important. This investigation outlines the Taguchi optimization methodology, which is applied to optimize cutting parameters in end milling operation. The study was conducted in machining operation for hardened die steel H-13. The processing of the job was done by solid carbide four flute end-mill tools under finishing conditions. The input machining parameters like spindle speed, depth of cut, and feed rate were evaluated to study their effect on SR (surface roughness) using L-9 standard orthogonal array. Signal-to-Noise (S/N) ratio, Analysis of Variance (ANOVA) and various plots were generated using MINITAB software. Finally the effect of machining input parameters on SR is studied and reported in this paper.

Lohithaksha M Maiyer et al. studied the optimization of machining parameters for end milling of Inconel 718 super alloy using Taguchi based grey relational analysis. Cutting speed, feed rate and depth of cut ate optimized with, consideration of surface roughness and material removal rate (MRR). Used uncoated tungsten carbide tool of 10mm diameter and 4 flutes. L9 orthogonal array of Taguchi method are applied. Analysis of variance (ANOVA) and grey

relational analysis is also applied to get the most significant factor. He found that cutting velocity is most affecting factor and followed by feed rate affecting the multiple performance characteristics.

M. Alauddin et al. studied the optimization of surface finish in end milling Inconel 718 by using a tungsten carbide insert in dry condition. The nose radius of insert is 0.80 mm. for the analysis of result he has taken two process variables: cutting speed and feed rate. He Used response surface method for experimental design. He found that if feed rate is increased, then the surface roughness is also increased and vice versa and if cutting speed is increased.

III METHODOLOGY USED

3.1 Finite Element Analysis (FEA)

Finite Element Analysis (FEA) was first developed in 1943 by R. Courant, who utilized the Ritz method of numerical analysis and minimization of variational calculus to obtain approximate solutions to vibration systems. Shortly thereafter, a paper published in 1956 by M. J. Turner, R. W. Clough, H. C. Martin, and L. J. Top established a broader definition of numerical analysis. The paper centered on the "stiffness and deflection of complex structures".

By the early 70's, FEA was limited to expensive mainframe computers generally owned by the aeronautics, automotive, defense, and nuclear industries. Since the rapid decline in the cost of computers and the phenomenal increase in computing power, FEA has been developed to an incredible precision. Present day supercomputers are now able to produce accurate results for all kinds of parameters. FEA consists of a computer model of a material or design that is stressed and analyzed for specific results. It is used in new product design, and existing product refinement. A company is able to verify a proposed design will be able to perform to the client's specifications prior to manufacturing or construction. Modifying an existing product or structure is utilized to qualify the product or structure for a new service condition. In case of structural failure, FEA may be used to help determine the design modifications to meet the new condition.

IV STRUCTURAL ANALYSIS OF MILLING MACHINE

4.1 MATERIAL –HSS

AT -3000 RPM

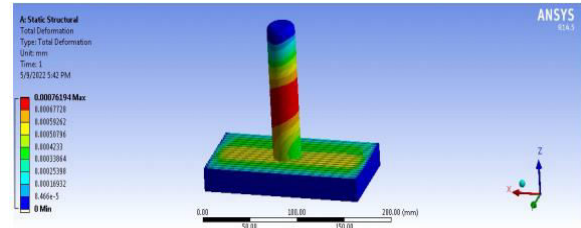


Fig 1: Total deformation at 3000 RPM for HSS material

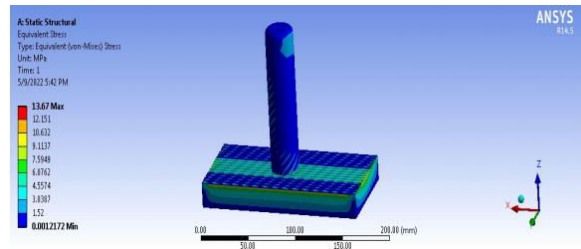


Fig 2: Stress at 3000 RPM for HSS material

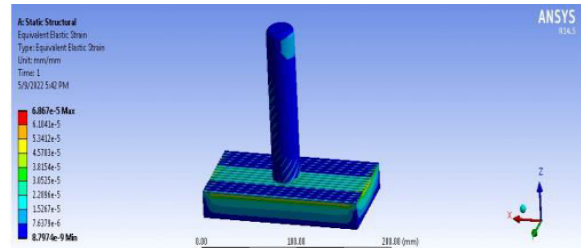


Fig 3: Strain at 3000 RPM for HSS material

AT RPM-4000

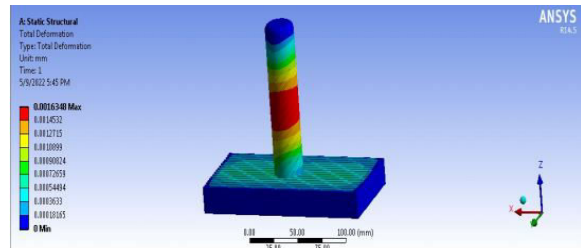


Fig 4: Total deformation at 4000 RPM for HSS material

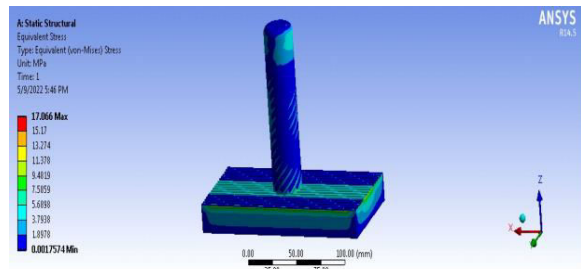


Fig 5: Stress at 3000 RPM for HSS material

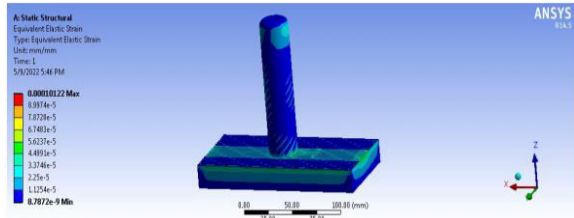


Fig 6: Strain at 3000 RPM for HSS material
4.2 MATERIAL – CEMENTED CARBIDE AT RPM-3000 RPM

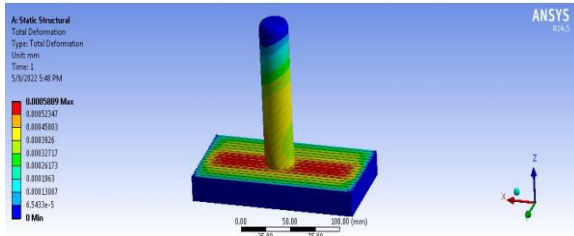


Fig 7: Total deformation at 3000 RPM for cemented carbide material

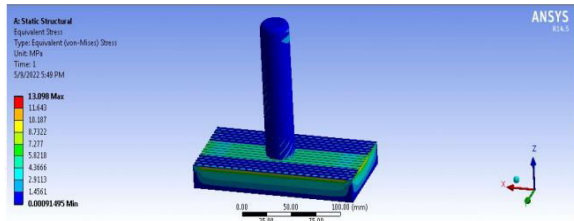


Fig 8: Stress at 3000 RPM for cemented carbide material

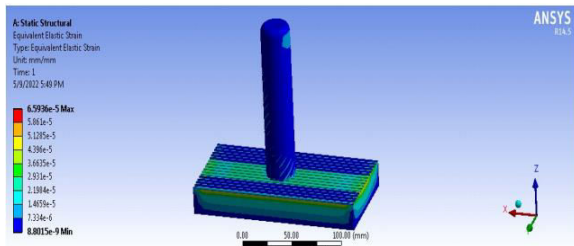


Fig 9: Strain at 3000 RPM for cemented carbide material
V TRANSIENT THERMAL ANALYSIS OF MILLING MACHINE

5.1 TOOL MATERIAL- HSS

A) FLUID –AIR

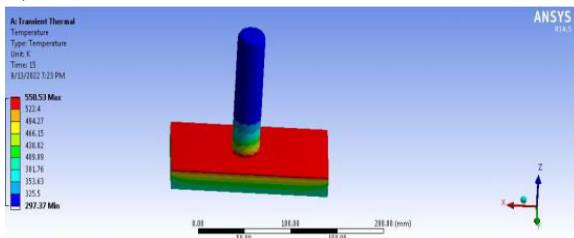


Fig 10: Temperature for air fluid for HSS material

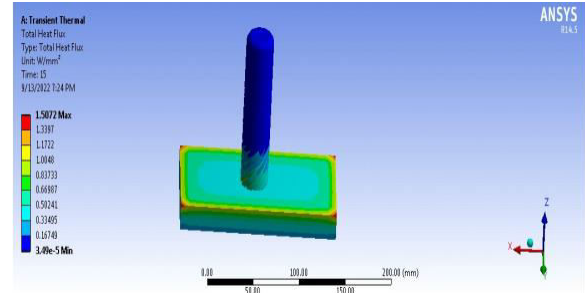


Fig 11: Heat flux for air fluid for HSS material

B) FLUID –PALM OIL

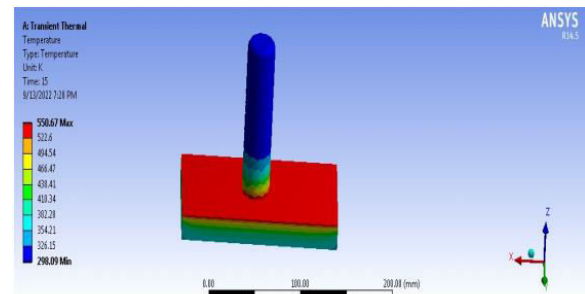


Fig 12: Temperature for fluid Palm oil material

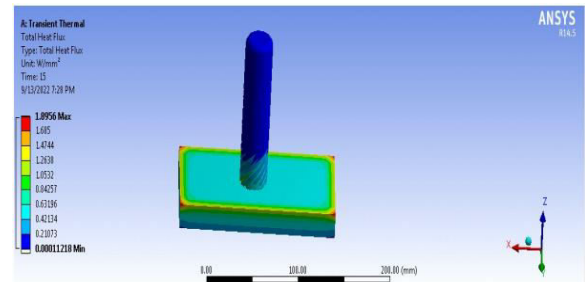


Fig 13: Heat flux for Palm oil material

C) FLUID- SERVO OIL

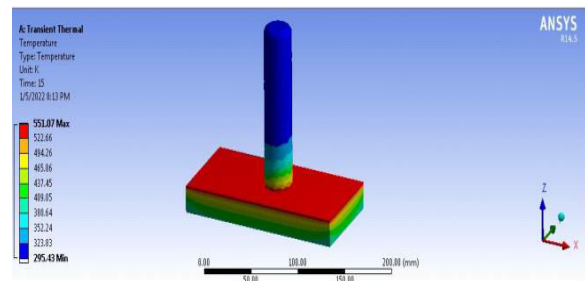


Fig 14: Temperature for Servo oil material

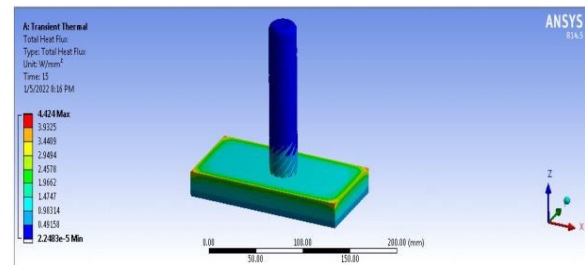


Fig 15: Heat flux for Servo oil material

D) FLUID-SUNFLOWER OIL

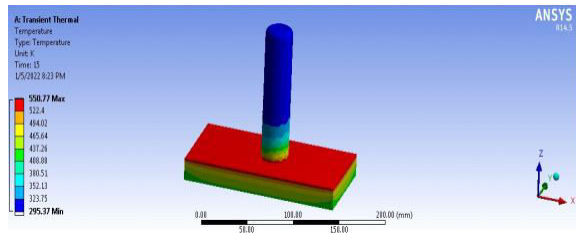


Fig 16: Temperature for sun flower oil material

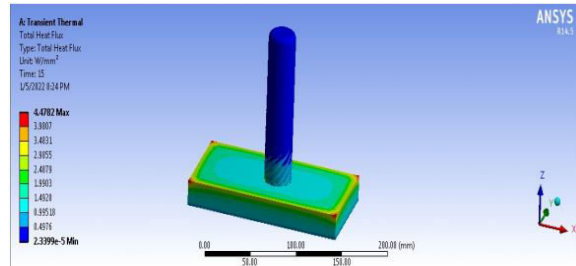


Fig 17: Heat flux for Sun flower oil material

5.2 TOOL MATERIAL- CEMENTED CARBIDE

A) FLUID- AIR

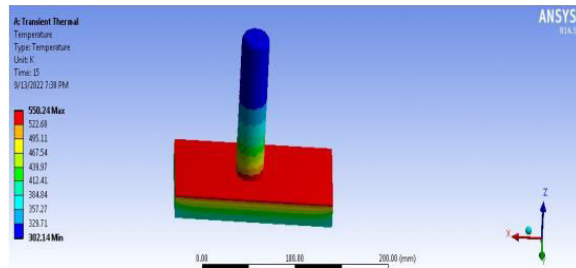


Fig 18: Temperature for cemented carbide material

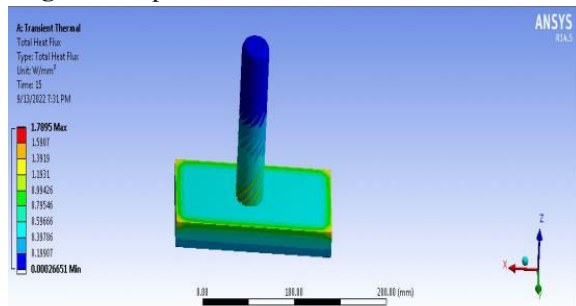


Fig 19: Heat flux for cemented carbide material

B) FLUID- PALM OIL

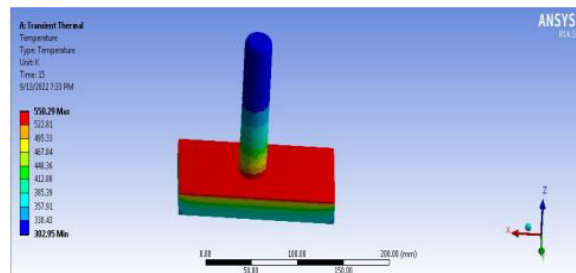


Fig 20: Temperature for palm oil material

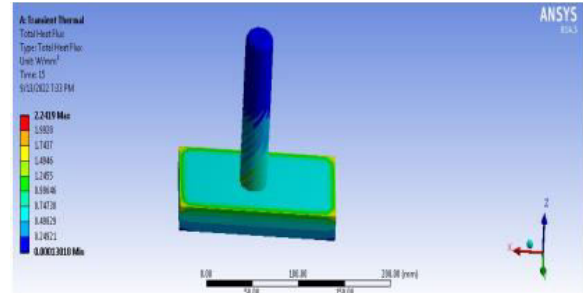


Fig 21: Heat flux for palm oil material

C) FLUID- SERVO OIL

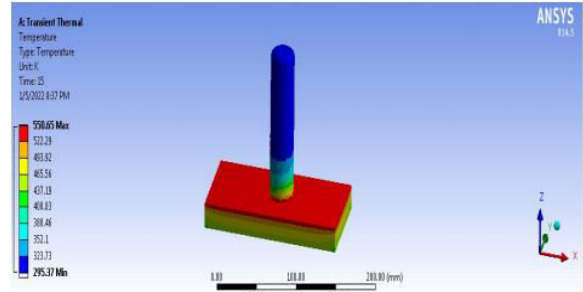


Fig 22: Temperature for servo oil material

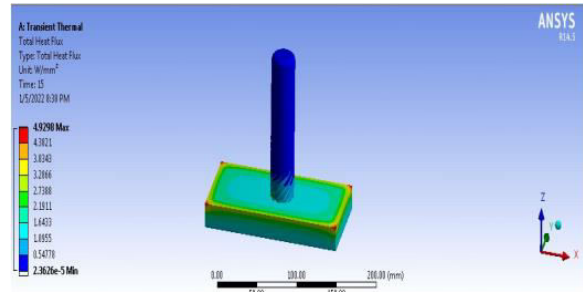


Fig 23: Heat flux for servo oil material

D) FLUID- SUN FLOWER OIL

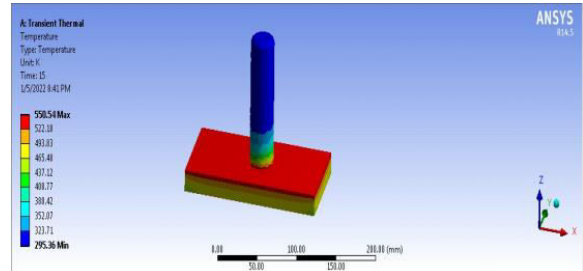


Fig 24: Temperature for sun flower oil material

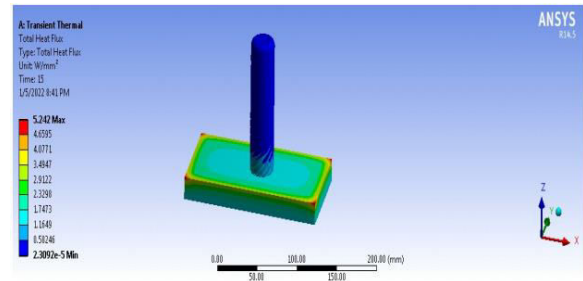


Fig 25: Heat flux for sun flower oil material

Table 2: Static Analysis Results

TOOLMATERIAL	Tool Rotational Speed(Rpm)	Total Deformation (mm)	Stress (Mpa)	Strain
HSS	3000	0.00076194	13.67	6.86e-5
	4000	0.0016348	17.066	7.12e-5
CEMENTED CARBIDE	3000	0.0005899	13.098	6.59e-5
	4000	0.0010641	14.326	7.21e-5

Table 3: Thermal analysis results

TOOL MATERIAL	FLUID	TEMPERATURE(k)		HEAT FLUX (W/mm ²)
		MIN	MAX	
HSS	AIR	297.37	550.53	1.5072
	PALM OIL	298.09	550.67	1.8956
	SERVO OIL	295.43	551.07	4.424
	SUNFLOWER OIL	295.37	550.77	4.4782
CEMENTED CARBIDE TOOL	AIR	302.14	550.24	1.7895
	PALM OIL	302.95	550.29	2.2419
	SERVO OIL	297.37	550.65	4.9298
	SUNFLOWER OIL	295.36	550.54	5.242

VI. CONCLUSIONS

In this thesis servo oil and sun flower oil are used as coolants in machining operations. Cemented carbide and HSS cutting tools are employed as cutter with different temperatures. Transient Thermal analysis is done on the parametric model to determine the effect of different cutting fluids on the cutters. Parametric Modeling is done in CATIA and analysis is done in Ansys. By observing the analysis results, the heat transfer rates are more when the fluid Sunflower oil is used since thermal flux is more than servo oil. When compared the values for tool materials, the heat transfer rates are more for carbide tool than HSS tool.

REFERENCES

- [1]. The Measurement of chip-tool interface Temperature in the Turning of steel by L. B. Abhang, M. Hameedullah, International Journal of Computer Communication and Information System (IJCCIS), – Vol2. No1. ISSN: 0976–1349 July – Dec 2010
- [2]. Effect of tool geometry variation on finish turning – A Review by M. Dogra, V. S. Sharma, J. Dureja, Journal of Engineering Science and Technology Review 4 (1) (2011) 1-13
- [3]. Using the Response Surface Method to Optimize the Turning Process of AISI 12L14 Steel
- [4]. Optimization of Process Parameters of Turning Parts: A Taguchi Approach by Neeraj Sharma, Renu Sharma
- [5]. The Effect of Tool Construction and Cutting Parameters on Surface Roughness and Vibration in Turning of AISI 1045 Steel Using Taguchi Method by Rogov Vladimir Aleksandrovich, GhorbaniSiamak
- [6]. Parametric investigation of turning process on mild steel aisi 1018 material by J. M. Gadhiya, P. J. Patel
- [7]. Evaluation and Optimization of Machining Parameter for turning of EN 8 steel by Vikas B. Magdum, Vinayak R. Naik
- [8]. Analyses of surface roughness by turning process using Taguchi method by S. Thamizhmanii, S. Saparudin, S. Hasan
- [9]. Application of Taguchi Method for Optimizing Turning Process by the effects of Machining Parameters by Krishankant, JatinTaneja, MohitBector, Rajesh Kumar
- [10]. Multi-Objective Optimization of the Cutting Forces in Turning Operations Using the Grey-Based Taguchi Method by Yigit
- [11]. Experimental investigation of Material removal rate in CNC turning using Taguchi method by Kamal, Anish and M.P.Garg
- [12]. Optimization of Cutting Parameters of Composite Materials using Genetic Algorithm by Dhavamani and Alwarsamy